



How to send and reply to an SMS from a Shout Nano using the GAP Portal

IMPORTANT:

- Check with your service provider that SMS messaging has been enabled for your account. If this feature has not been enabled, you will be unable to send a message from your device to an SMS recipient.
- The recipient of an SMS can only reply back to the device if they are using a smart phone with a web browser application installed.

Step 1

Configure your device to enable SMS replies on the “My Device” page.

My Device

Edit Device Info

Device Id	300234010551150
Friendly Name	<input type="text" value="GAP Shout Nano #2"/>
Description	<input type="text"/>
Image	Not set <input type="button" value="Choose File"/> No file chosen
Device Type	NAL Shout Nano
Email Delivery	<input checked="" type="checkbox"/> Enable email delivery to this device
Device Email Address	300234010551150@dev.globalalerting.com
Sms Replies	<input checked="" type="checkbox"/> Enable replies to sms messages from this device
Dynamic Geofence Radius	<input type="button" value="No Geofence"/>

or [Cancel](#)

If you skip this step, then the Portal can still send messages to SMS recipients, but the recipient will be unable to reply.

Step 2

Add an Address Book Entry to an existing Distribution List (or create a new one).

Create Address Book Entry

Device: GAP Shout Nano #2

Enter the new address book entry details, then click the Add Entry button.

Distribution List	TextMessages
Type	SMS
Address	+447720296325

or

Step 3

Add a new rule to route the message from the device to the Distribution List.

Add Rule for device : GAP Shout Nano #2

Here you can create a rule to notify a Distribution List when an event happens on your device. See help for more details.

When	A text message has been received from this device
Send a message to this Distribution List	TextMessages

or

Your Address Book will now contain an SMS entry and a rule. Please note that you can have any message sent to a recipient as an SMS, not just text messages e.g. position reports, check-ins etc.

TextMessages	Type	Address	Edit	Delete
+ Add a new entry	SMS	+447720296325		

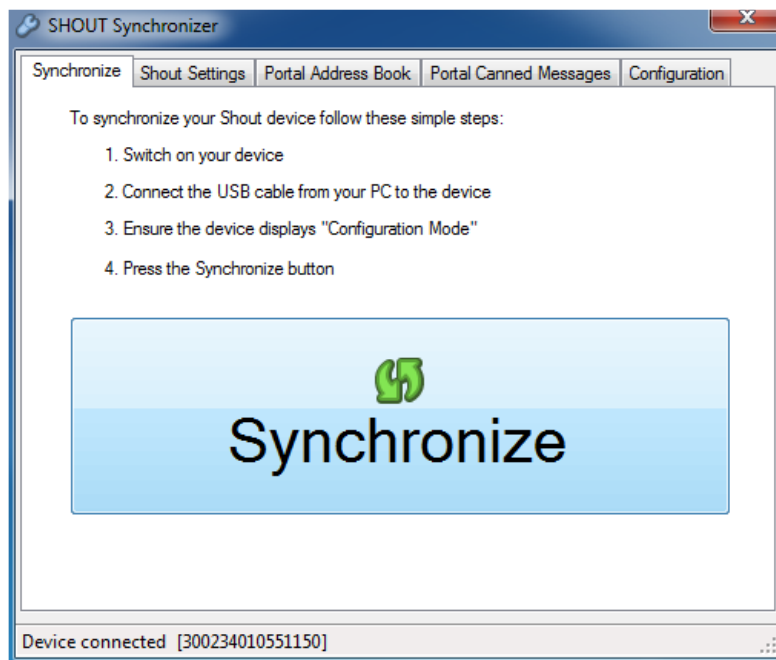
Rules

[+ Add a new Rule](#)

Existing Rules	Edit	Delete
When A canned message has been received from this device , send a message to the distribution list CannedMessages .		
When A check in message has been received from this device , send a message to the distribution list CheckIns .		
When A text message has been received from this device , send a message to the distribution list TextMessages .		
When An automatic position report message has been received from this device , send a message to the distribution list PositionReports .		
When An emergency cancel message has been received from this device , send a message to the distribution list Emergencies .		
When An emergency message has been received from this device , send a message to the distribution list Emergencies .		
When This device crossed a geofence , send a message to the distribution list GeofenceAlerts .		

Step 4

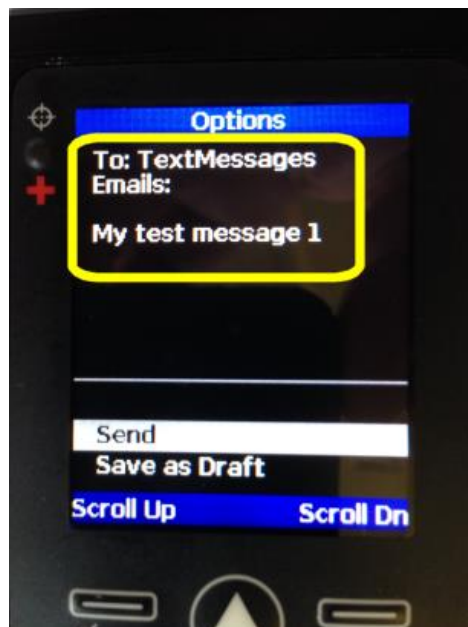
You must now synchronize your device with the portal to ensure that your address books match.



Please note that you do not have to synchronize your device if you are only adding an SMS Address Book Entry to a Distribution List on the Portal that has already been synchronized.

Step 5

Having synchronized your device, you may now send a message from the device selecting the Distribution List name (Contact) you created earlier.



Step 6

When the message has been received by the portal, it will send the message to the recipient as an SMS.

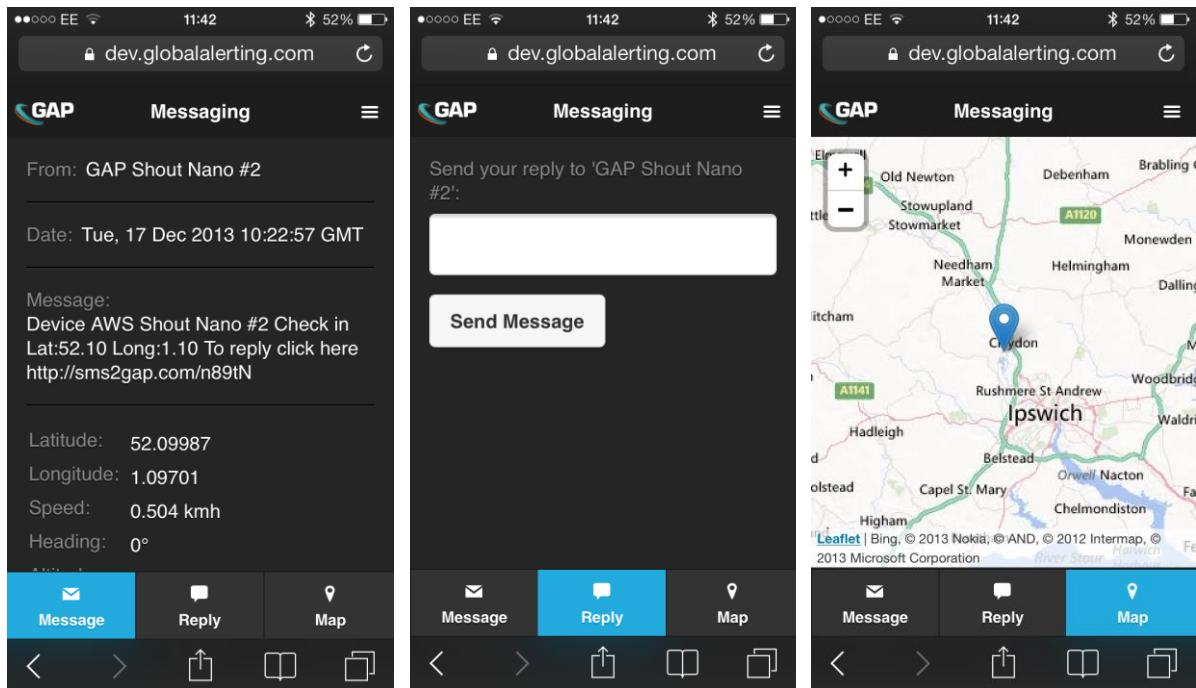
Device GAP Shout Nano
#1 My test message 1 Lat:
52.12 Long:1.11 To reply
click here [http://
sms2gap.com/ABggE](http://sms2gap.com/ABggE)

To reply, tap the link included in the message. You will be taken to a web page where you can view the original message and reply to it. The portal will then send the reply to the device.



Update

The SMS reply smart phone web application is being upgraded in a future release. The following screen shots show the advanced functionality available.



END OF DOCUMENT